



APARTMENT MASTERPLAN & UNIT PLANS





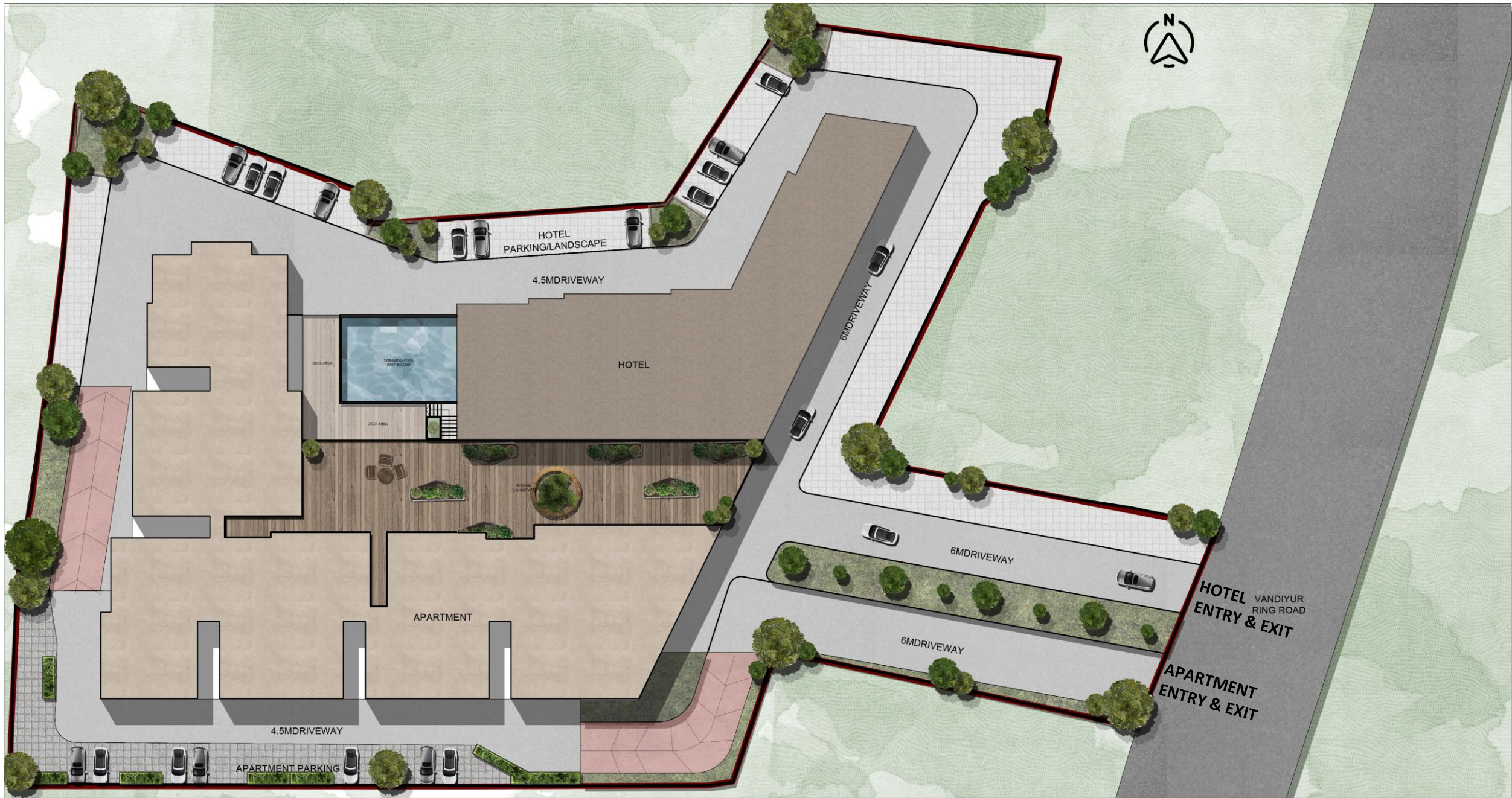
SITE LOCATION





SITE LOCATION





MASTERPLAN





APARTMENT_UNIT MATRIX					
Unit No	Type	Plinth Area	Saleable Area	No.of Units/Floor	Total No. of Units
1	4BHK	2349	2936	1	11
2	3BHK	1412	1765	1	10
3	2BHK	1100	1375	1	10
4	2BHK	1060	1325	1	10
5	4BHK	2005	2506	1	11
6	3.5BHK	1800	2250	1	11
7 & 8	3BHK	1412	1765	2	22
9	4BHK	2164	2705	1	11
10	3BHK	1430	1788	1	11
TOTAL NO.OF UNITS					107



APARTMENT - UNIT 1  
4BHK / EAST FACING

PLINTH AREA – 2349 SQ.FT  
SUPER BUILT-UP AREA – 2936 SQ.FT







APARTMENT - UNIT 2  
3BHK / WEST FACING

PLINTH AREA – 1412 SQ.FT  
SUPER BUILT-UP AREA – 1765 SQ.FT



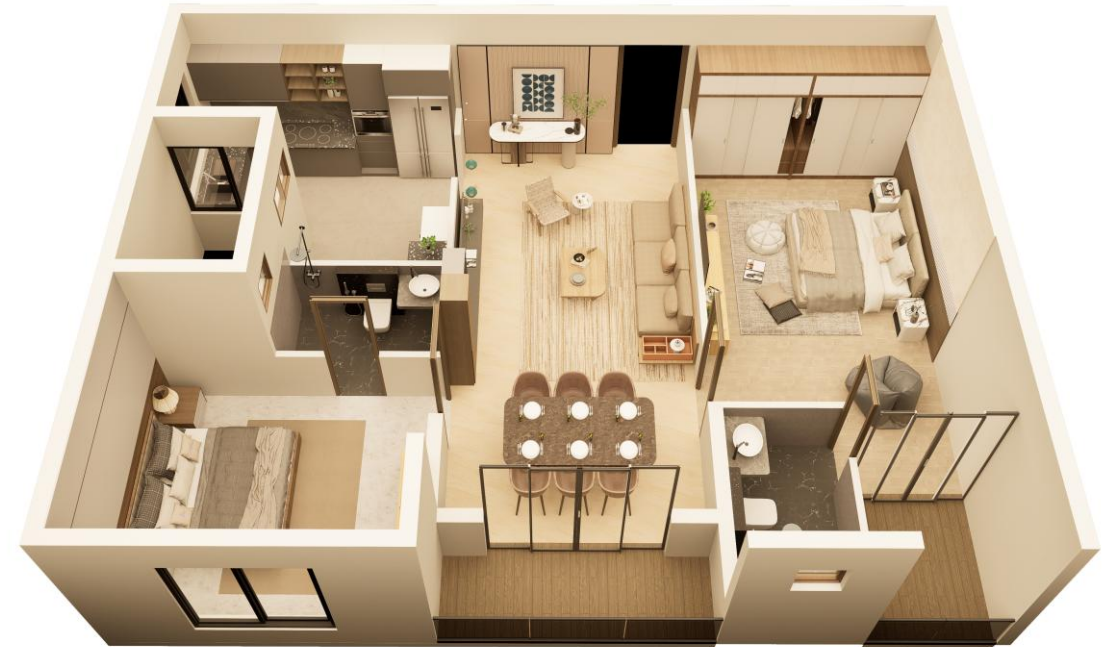


APARTMENT - UNIT 3  
2BHK / SOUTH FACING

PLINTH AREA – 1100 SQ.FT  
SUPER BUILT-UP AREA – 1375 SQ.FT





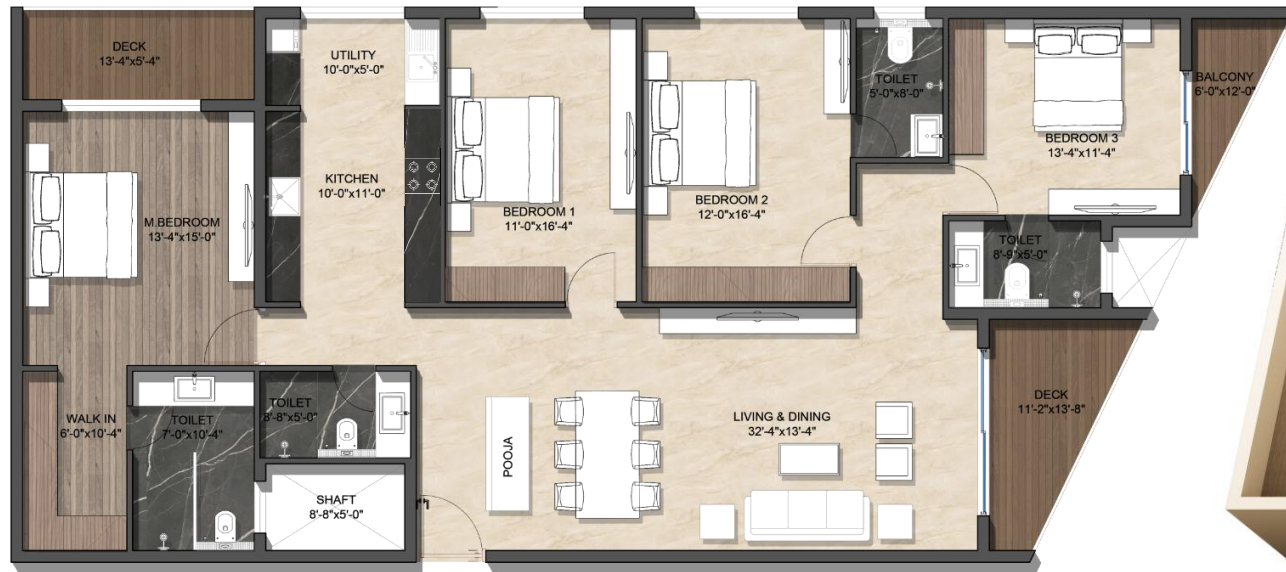


APARTMENT - UNIT 4  
2BHK / SOUTH FACING

PLINTH AREA – 1060 SQ.FT  
SUPER BUILT-UP AREA – 1325 SQ.FT







APARTMENT - UNIT 5  
4BHK / SOUTH FACING

PLINTH AREA – 2004 SQ.FT  
SUPER BUILT-UP AREA – 2505 SQ.FT







APARTMENT - UNIT 6  
3.5BHK/NORTH FACING

PLINTH AREA – 1800 SQ.FT  
SUPER BUILT-UP AREA – 2250 SQ.FT







APARTMENT - UNIT 7 & 8  
3BHK / NORTH FACING

PLINTH AREA – 1412 SQ.FT  
SUPER BUILT-UP AREA – 1765 SQ.FT





APARTMENT - UNIT 9  
4BHK / NORTH FACING

PLINTH AREA – 2164 SQ.FT  
SUPER BUILT-UP AREA – 2705 SQ.FT







APARTMENT - UNIT 10  
3BHK / EAST FACING

PLINTH AREA – 1430 SQ.FT  
SUPER BUILT-UP AREA – 1788 SQ.FT

